



**BROWN & TOLAND
PHYSICIANS**

Allscripts Universal Application Integrator (UAI) Installation

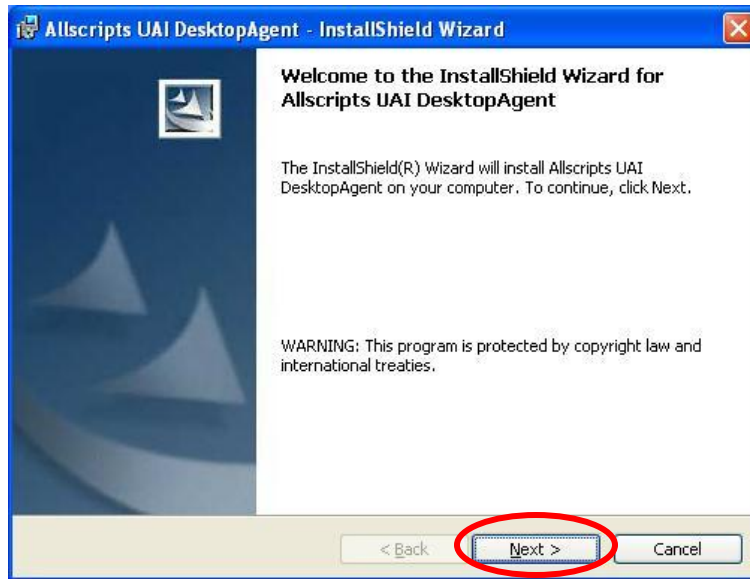
Revised by: Nino Manuel, Service Support

Date: 11/7/2011

Download and Run the Allscripts' UAI from:
http://www.browndtoland.com/Pages/V11_EMR_Installer.aspx

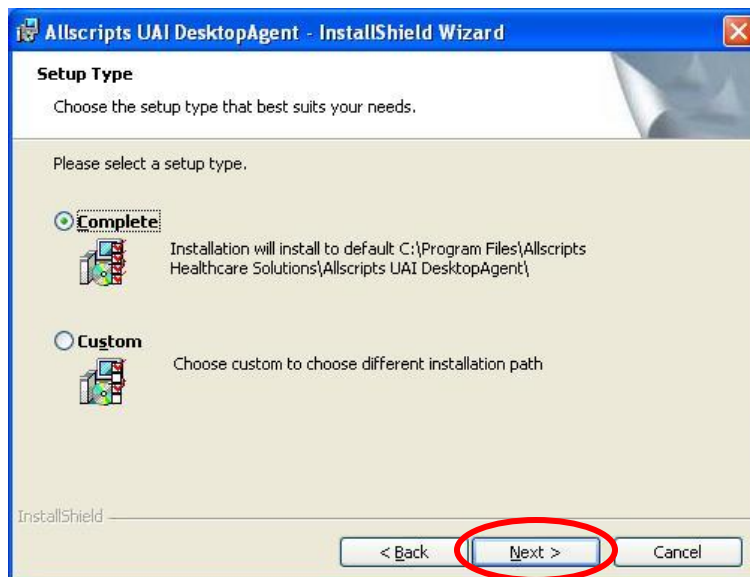
Follow the InstallShield Wizard prompts

1. Click on **Next**

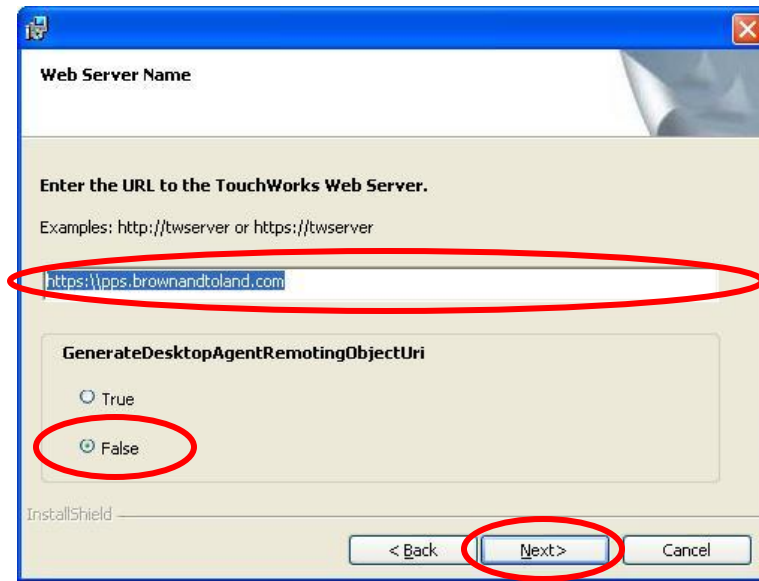


2. Click on **Next**

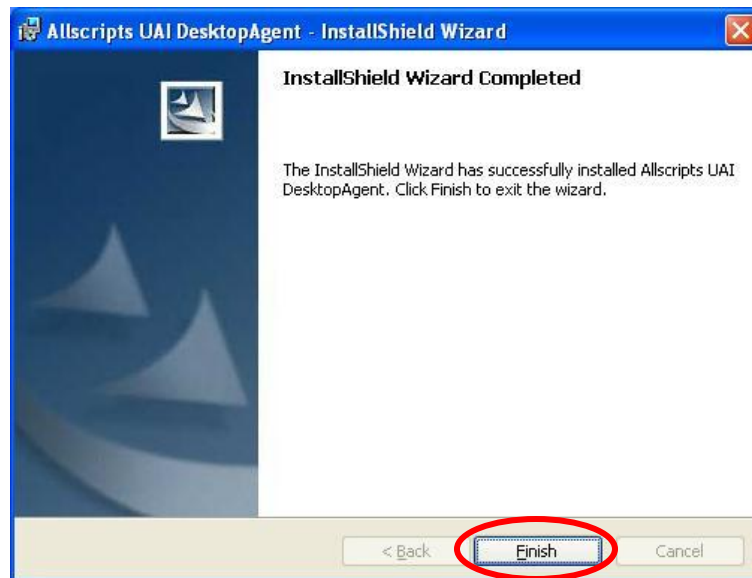
** Select **Custom** to change the default directory. The default directory is:
C:\Program Files\Allscripts Healthcare Solutions\Allscripts UAI DesktopAgent\



3. Enter the TouchWorks URL, **https:\\pps.browandtoland.com** in the space provided, select **False** for **GenerateDesktopAgentRemotingObjectUri**, and Click on **Next**.



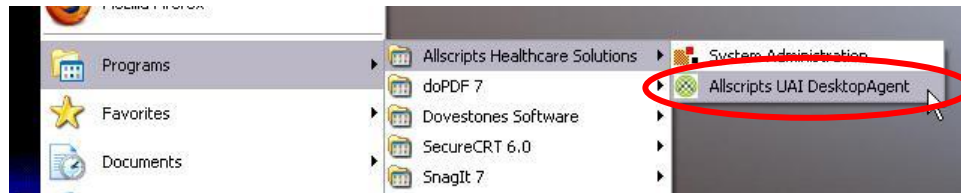
4. Click on **Finish** to complete the UAI installation.



5. Configure the UAI by:

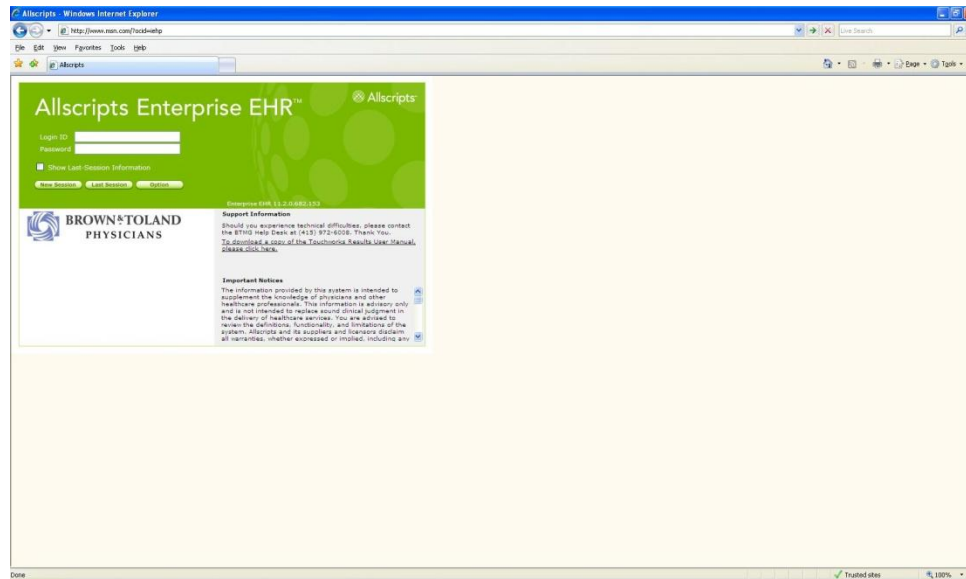
Launching the application from

Programs -> Allscripts Healthcare Solutions -> Allscripts UAI DesktopAgent

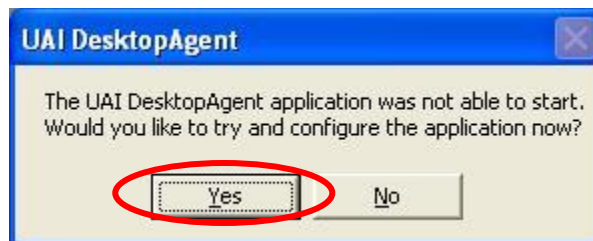


OR

Launching and logging into Enterprise
<https://pps.browndtoland.com/AHSWeb>



6. The following prompt will appear and click on **Yes**:



7. The URL's should auto populate, but validate that it's the following:

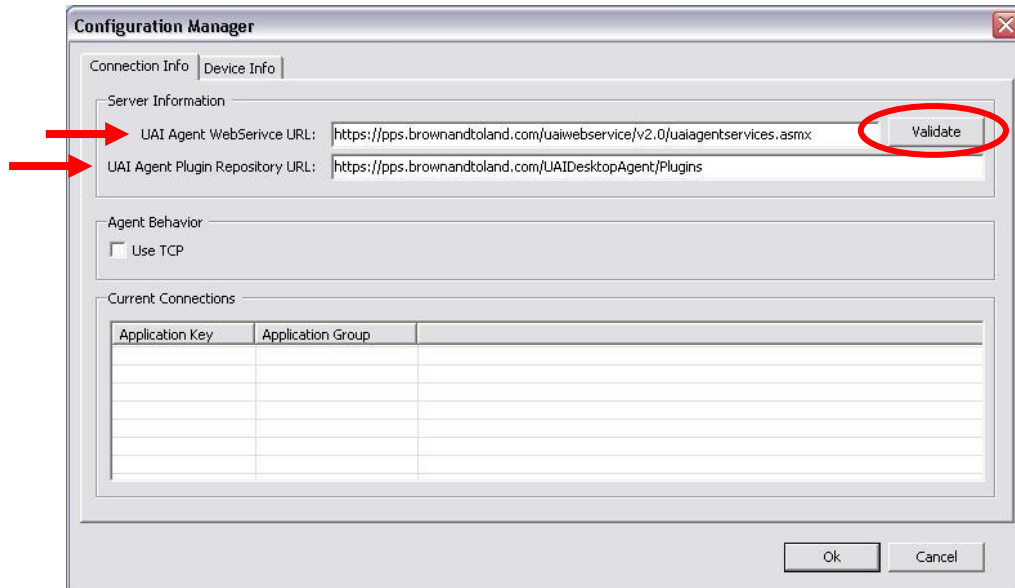
UAI Agent WebService URL:

<https://pps.browndtoland.com/uaiwebservice/v2.0/uiaagentservices.asmx>

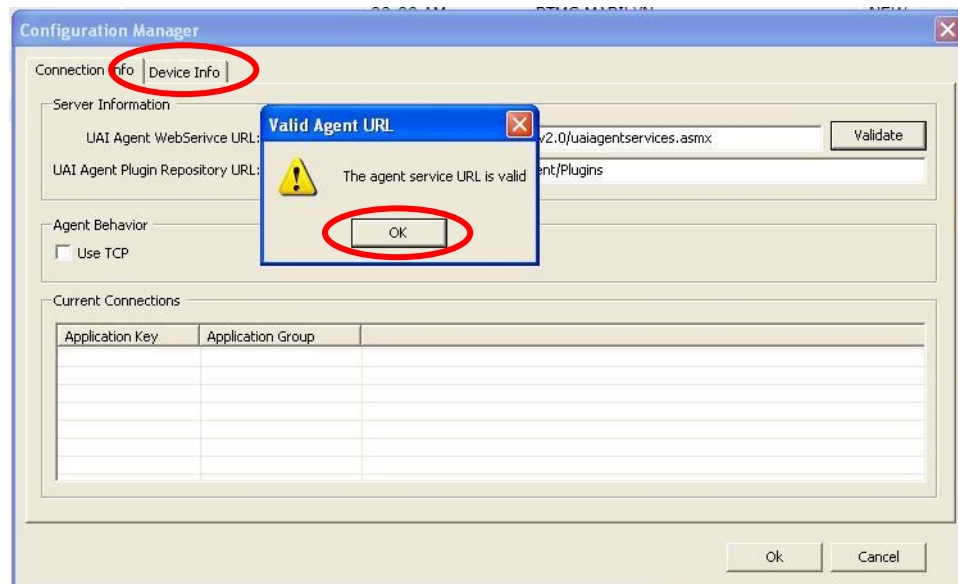
UAI Agent Plugin Repository URL:

<https://pps.browndtoland.com/UAIDesktopAgent/Plugins>

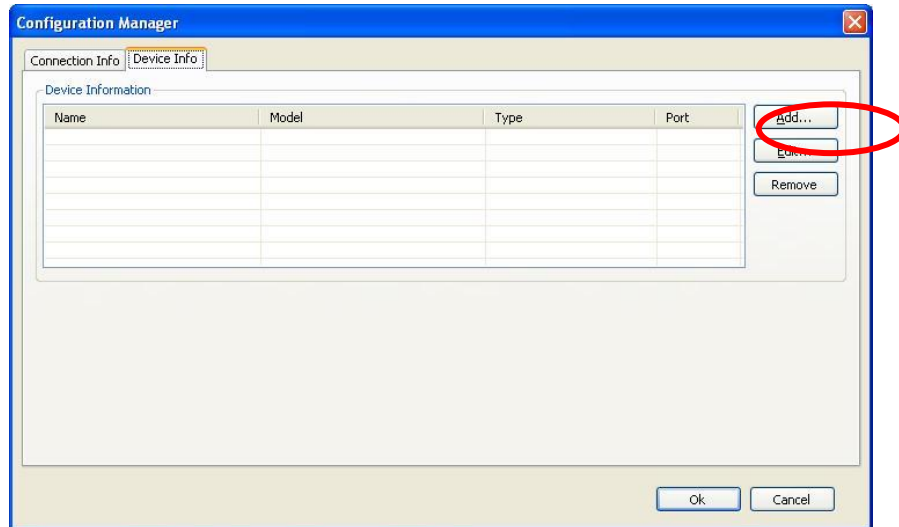
Click on **Validate**:



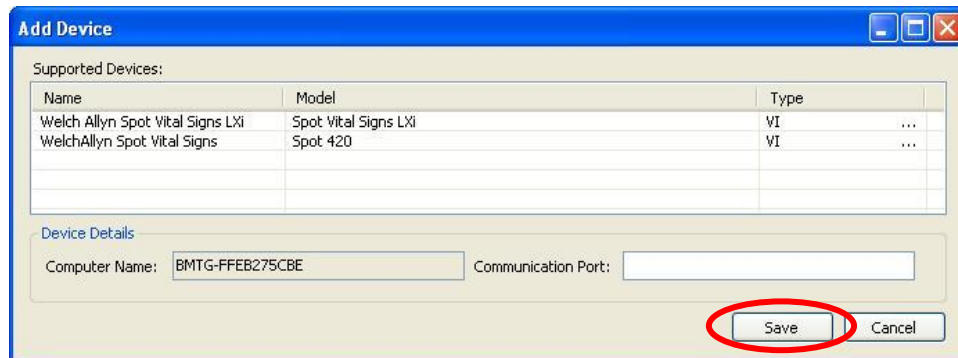
8. Click on **OK** to clear the prompt and click on **Device Info**:



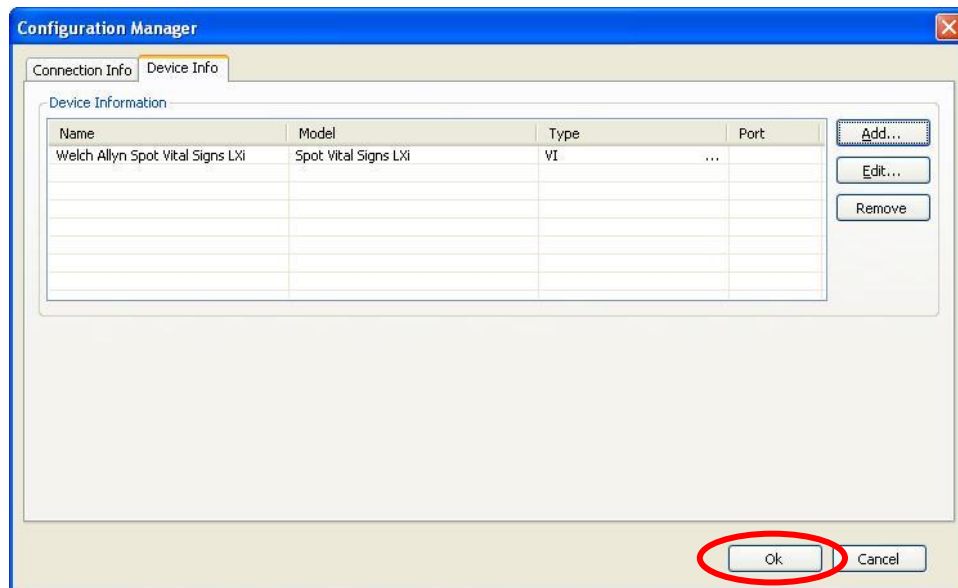
9. Click on **Add**:



10. Select the appropriate device and click on **Save**:



11. Click on **OK** when all devices have been added:



12. Click on **OK** to restart the UAI and complete the configuration:



13. The UAI will restart. Double click on the System Tray Icon



Validate the hardware is installed



** A practice will only need the device they need installed.

14. To validate the UAI is working properly, log into **Enterprise** select a patient, which should show up on the banner (patient in context) and the patient should also show up in the UAI:

