



**BROWN & TOLAND
PHYSICIANS**

Installing the Citrix Client for Apple

Author: Tom O'Donnell, PPS IT Support

Revised: 11/11/2011

1. Go to www.browndtoland.com
2. Scroll all the way to the bottom and go to "[Site Map](#)"

Working at Brown & Toland
We were voted one of the Best Places to years in a row. [Learn more about careers.](#)

[HOME](#) | [Privacy Policy](#) | [Help](#) | [Contact Us](#) | [Site Map](#)

Copyright © Brown & Toland 2004

3. Scroll to the bottom of the site map and go to "[BTMG Citrix Installer](#)"

■ **[HIPAA Agreement](#)**

- [BTMG Citrix Installer](#)
- [HIPAA Agreement](#)
- [BTMG-EMR Installer Advanced](#)
- [BTMG-EMR Installer\(BTMG IT Use Only\)](#)
- [V11 EMR Installer](#)
- [Training Materials](#)

[HOME](#) | [Privacy Policy](#) | [Help](#) | [Contact Us](#) | [Site Map](#)

Copyright © Brown & Toland 2004

4. Select "[MacCitrix10.dmg](#)"

[BTMG Citrix Installer](#)

In order to log into BT C.A.R.E. or PPS, the Citrix application must be installed. Citrix is a remote access program that allows the user to launch application from a Web site.

Click on the links below for the Citrix installers and installation instructions.

[Citrix11.msi installer for Windows](#)

This installs the Citrix application for Windows users

File size: 6064 Kb

~~Date Posted: Jan 25, 2011~~

[MacCitrix10.dmg](#)

This installs the Citrix application for Mac users

File size: 6415 Kb

Date Posted: Jan 25, 2011

[Brown and Toland Physicians Citrix Icons](#)

This program installs Citrix icons on your desktop and start menu

File size: 211 Kb

Date Posted: Jan 25, 2011

[Citrix Installer Instructions](#)

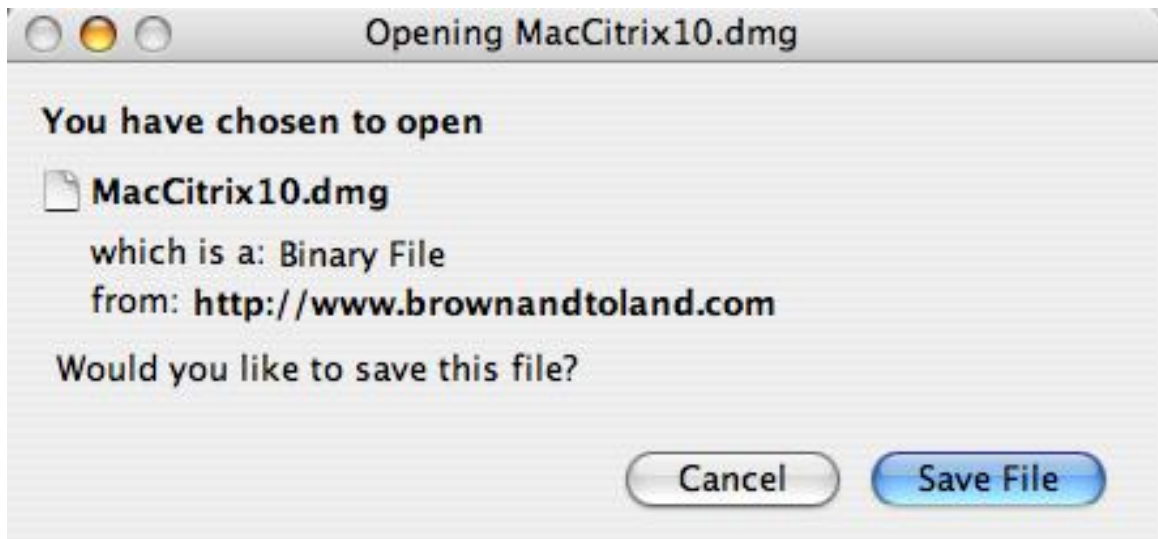
Instructions for installing the Citrix application for Windows and Mac users

File size: 1322 Kb

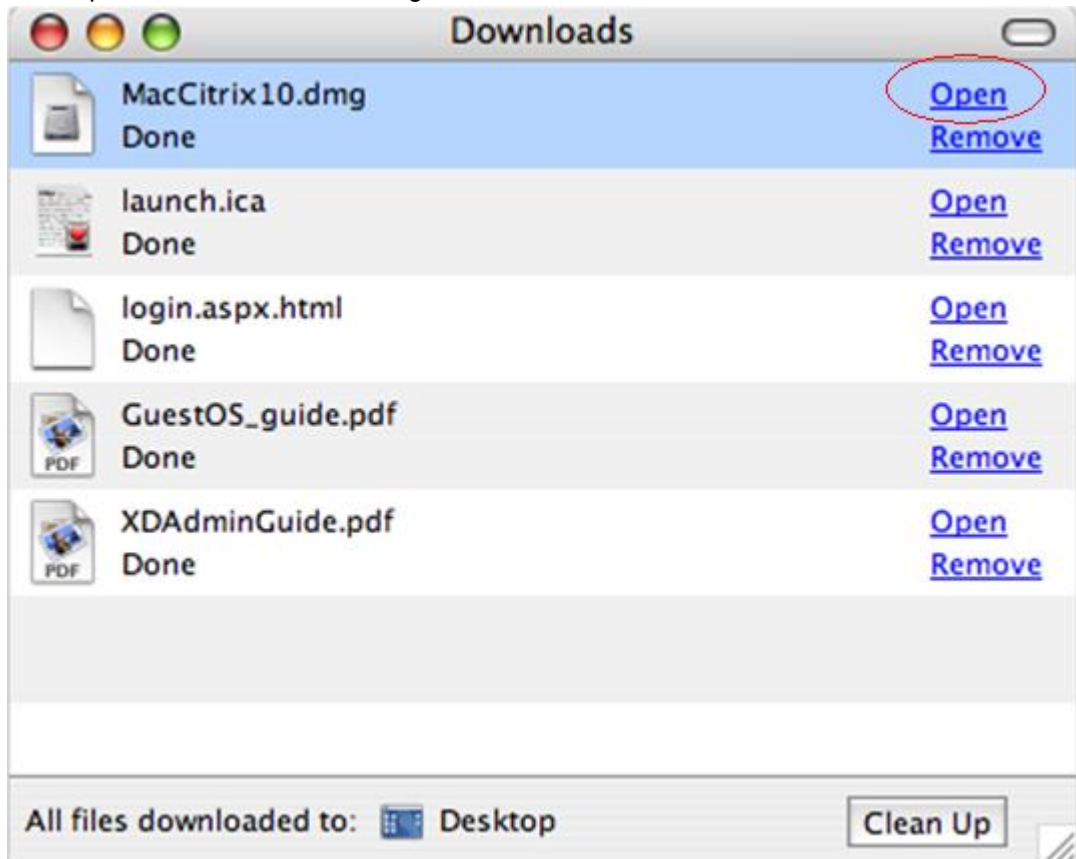
Date Posted: Jan 25, 2011

Please call the service desk at 415-972-6008 if you have questions or comments.

5. Click Save File



6. Click Open on the MacCitrix10.dmg download



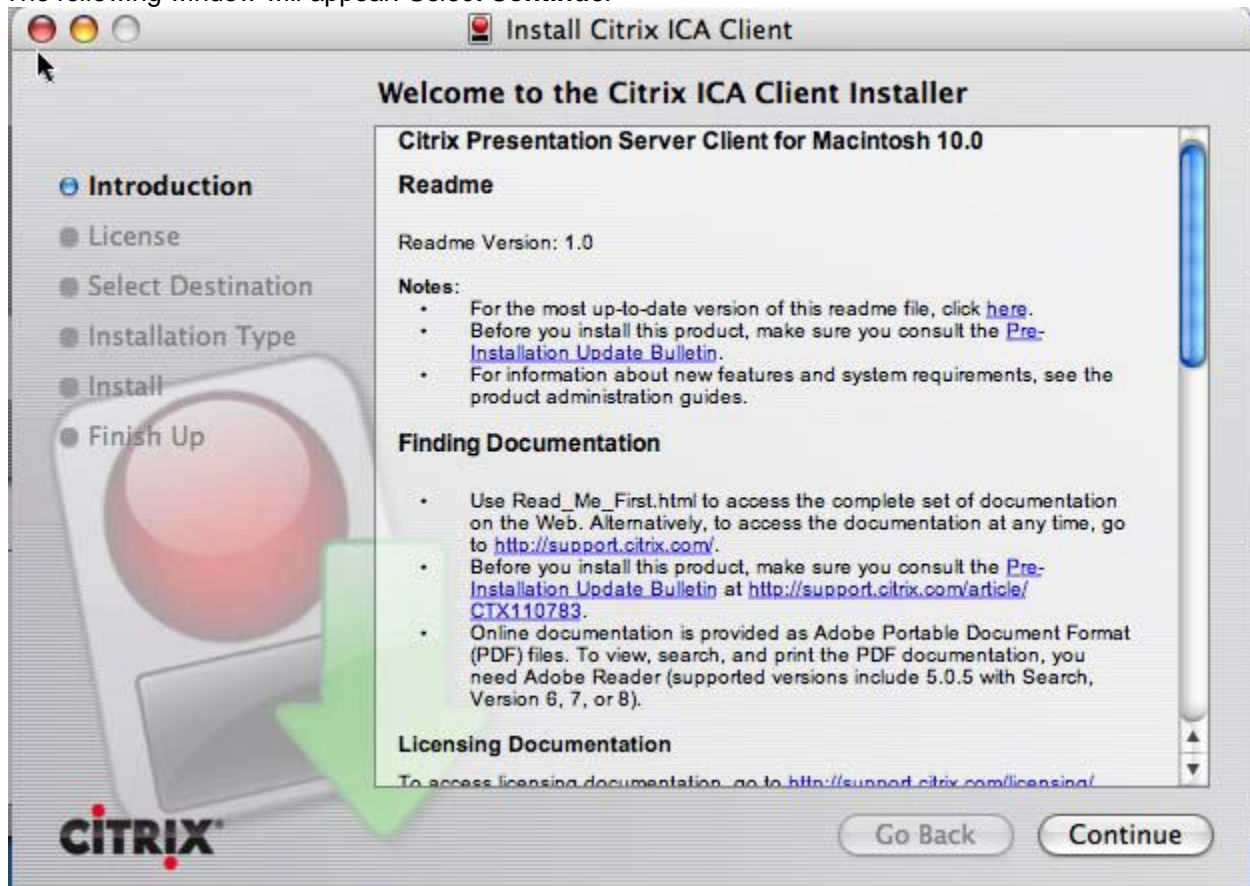
NOTE: You can also run the file that will be created on the desktop:



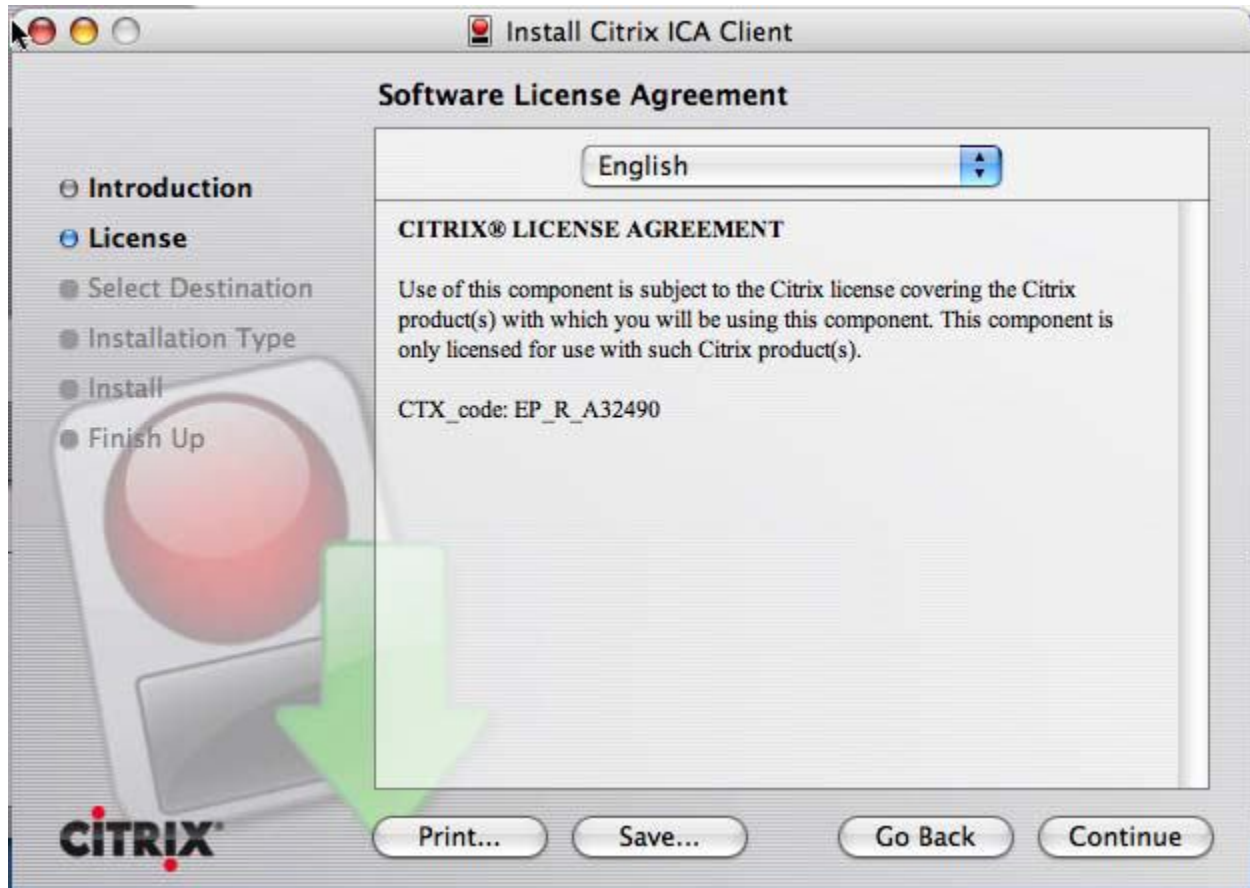
1. The install may start automatically. If it does not, click on the **Citrix ICA Client** icon.



The following window will appear. Select **Continue**.



9. Select **Continue**.



10. Select **Agree**.



11. Choose **Continue**.



12. Select **Install**.



13. Enter your OS X password and click on **OK**.



14. Select **Close**. The client install is complete.



15. If the follow window is still open, you may close it.



If desired, you may remove the Citrix install file from the desktop. Just drag it to the Trash can. You may need to eject the MacICA_OSX image in Finder, before deleting.



Go to <https://citrixsf.browndtoland.com> to log on to Citrix.